

West Norfolk & King's Lynn Beekeepers Association

Events 2009

The Friendly Beekeepers of Norfolk

Saturday 3 rd January 1.30 pm	Oxalic Acid treatment at the Association Apiary, Flitcham with Keith Morgan SBI
Friday 30 th January 7.30 pm	New Year Meal – Oriental Palace, 204 Main Road, West Winch (about 2 miles south of the Hardwick Roundabout on the A10) Sat Nav post code : PE33 0NP
Sunday 15 th February 2.30 pm	Pollen Analysis at Tottenhill with Paul Metcalf
Saturday 14 th March 2.30 pm	AGM at Tottenhill – followed by a talk on bees in warfare by author and beekeeper Ray Jones
Saturday 4 th April 1.00 pm	GRAND OPENING by Henry Bellingham MP + Setting up an Apiary & opening hives for the first time – Association Training Apiary, Blackborough End
Saturday-Sunday 25-26 th April	East Anglian Game & Country Fair, Norfolk Showground www.ukgamefair.co.uk
Friday-Sunday 17-19 th April	BBKA Spring Convention – Stoneleigh, Warwickshire
Sunday 17 th May 10 am – 4 pm	'Healthy Bees are Happy Bees' – Theory & Practical Day. Anmer Village Hall, PE31 6RN and Association Apiary, Flitcham
Saturday 13 th June 2.30 pm	Preparing Honey for Exhibiting with Jill Tinsey at 1 Old School Cottages Etling Green, Dereham. NR20 3EU (just off the A47 bypass toward Norwich)
Sunday 5 th July	Abbey Farm, Flitcham, Open Day (provisional). www.abbeyfarm.co.uk
Saturday 11 th July	Apiary Tour – to be arranged by Keith Morgan
Saturday-Sunday 25-26 th April	Holkham Country Fair www.holkham.co.uk
Wednesday 29th July	Sandringham Flower Show – WNKLBA Annual Honey Show
Sunday 2 nd August	Norfolk Small Holders Training Group Show, Sheringham Park, Upper Sheringham NR26 8TL www.nstg.org.uk
Sunday 16 th August 12.00 am	Bees on Heather – Trip to the Chatsworth Area of Derbyshire. Meet at 'Devonshire Arms' Baslow, Derbyshire, DE45 1SR
Sunday 23 rd August 2.30 pm	Checking for Nosema – Association Training Apiary, Blackborough End
Sunday 6 th September 2.30 pm	Preparing for winter – Assoc. Training Apiary, Blackborough End
Saturday 19 th September 2.30 pm	Social BBQ and prize giving – venue to be advised
Friday 2nd October 7.00 p.m.	Paul Metcalf and Gertrude the bee. "Gertrude " is a large model bee which Paul uses to explain the parts of a bee and how they function. Tottenhill Village Hall
Sunday 18 th October	Luncheon with speaker - to be arranged
Friday 30th October 7.00 p.m.	Don Cooper. Back by popular request for another interesting talk Tottenhill Village Hall
Fri 27th November 7.00 p.m.	Bee Bingo with Jill Tinsey and Brian Gemmell. Tottenhill Village Hall
December	Winter Varroa treatment – to be arranged
December	Christmas dinner – to be arranged

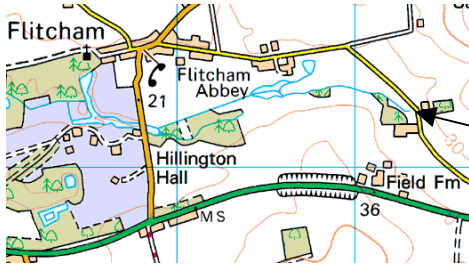
FOR MAPS of EVENT LOCATIONS, PLEASE TURN OVER

FULL DETAILS OF EVENTS WILL BE MADE AVAILABLE NEARER THE TIME AND WILL ALSO BE AVAILABLE ON THE WEBSITE at www.wnklba.co.uk

West Norfolk & King's Lynn Beekeepers Association

Events 2009

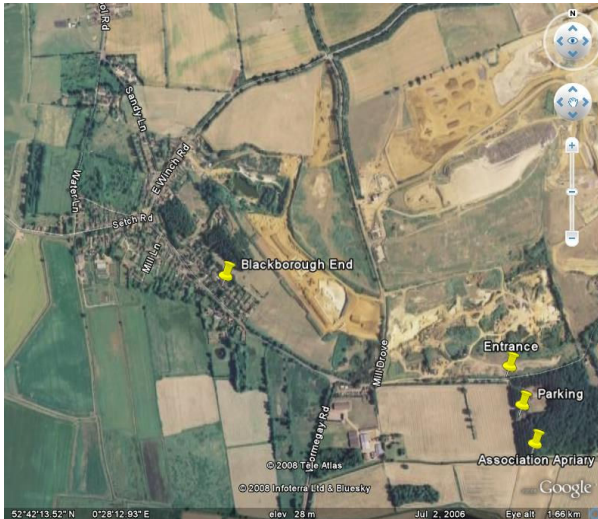
The Friendly Beekeepers of Norfolk



The Association Apiary Flitcham

Sat Nav post code : PE31 6BT

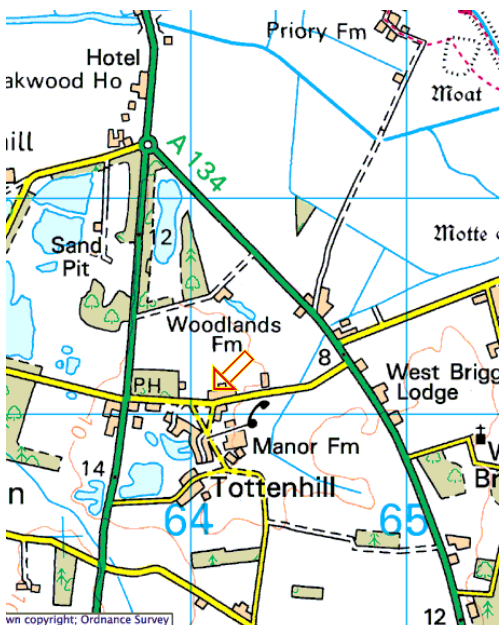
The apiary is courtesy of Abbey Farm at Flitcham , just off the main A148 Lynn to Fakenham road, about 5 miles from Lynn



The Association Training Apiary

Sat Nav post code : PE32 1SQ.

The Training Apiary is courtesy of Mrs. Ann Carter of Priory Farm at Blackborough End. , about 10 minutes along the A47 from Lynn to Norwich.



Tottenhill Village Hall

Sat Nav post code : PE33 0RS

Tottenhill is about 5 miles south of the Hardwick Roundabout on the A10 toward Downham Market