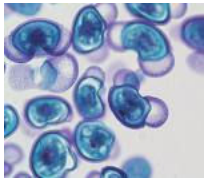
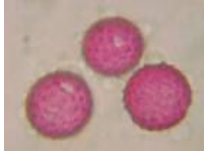




Website : www.wnklba.co.uk

NEXT EVENT:

Pollen Analysis



Pollen Analysis with Paul Metcalf & Rosemary Fordham
Sunday 15th February 2009, 2.30 p.m. at Tottenhill Village Hall
PE33 ORS (about 5 miles south of the Hardwick Roundabout on the A10)

Beekeeping expert Paul Metcalf, accompanied by Rosemary Fordham, explains how to analyse pollen in honey, using samples previously provided by members. Do you know what plants your bees are foraging on? Here is an opportunity to find out how to recognise pollens and understand why your bees choose certain plants in preference to others.

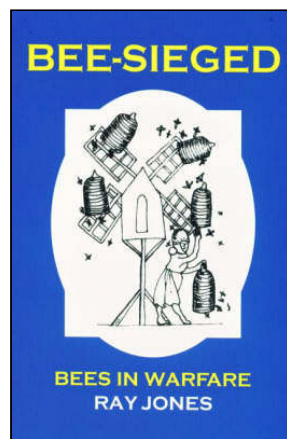
There will be opportunities for tasting honey and there will also be a display of pollen slides to look at too. If time permits, you may take the opportunity of trying your hand at preparing slides and using microscopes brought along by members. Hopefully you will leave wanting to develop your own library of reference slides.



AGM and talk on Bees in Warfare with author Ray Jones
Saturday 14th March 2009, 2.30 p.m. at Tottenhill Village Hall

PE33 ORS (about 5 miles south of the Hardwick Roundabout on the A10)

AGM / Bees in Warfare



Ray Jones first started beekeeping 13 years ago. Since then it has become his all consuming passion. He will tell us of the ways bees and their produce have been used in warfare throughout the centuries to the present day. Ray will be bringing along copies of his book too. (RRP £7.99)

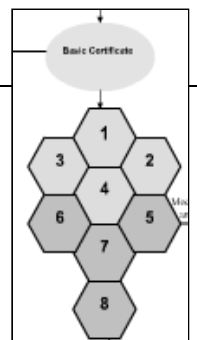
The AGM is also the time when members can stand for the committee. This year there are several vacancies as poor health and advancing years have crept up. We also review the accounts, hear about any initiatives – which continues to be exemplified by the Education sub-committee in particular.

Please do come along and support your association

As an incentive, there will be a raffle of First-Connect Rail Tickets!

New this year :

WNKLBA has had a high percentage of members pass BBKA exams in recent years and the education sub-committee has responded by putting on tuition for the BBKA modules. The most likely ones are 1 & 2 this autumn (Honeybee Management and Honeybee Products and Forage). The format will be a small number of members working together in mutual-support groups. **Please contact Terry on 01553 674051**



BBKA MODULES



REPORTS

Keith Morgan



Our Bee Inspectors Report :

At the recent committee meeting, Keith enquired if everyone present had checked their hives since Christmas. All answered in the positive. Terry advised that the association hives had also been checked. Keith explained the reason for his question was that at a meeting he had attended recently only 3 out of 67 beekeepers had checked their colonies. He emphasized the necessity of ensuring that the bees had sufficient stores especially given the extended spell of cold weather and advised that the giving of fondant or a quick manipulation to place a frame of food at either side of the cluster should be carried out. Finally Keith said that he had creosoted all but 3 of the association hives and that he would do the others in due course.

John Woodford



Library :

Joe Callaghan has kindly donated some videos to the budding library. With luck and a following breeze, we will have a library to bring along to meetings this year. With thanks to John Woodford for initiating this scheme and David Bancalari for undertaking to bring it along to meetings. We do need your surplus books though and any you feel able to lend to the Library. Call David Bancalari on 01603 755105 if you can help please.

Henry Bellingham M.P



Association Apiary – Blackborough End :

A work party has been organised for 21st February to construct the shed base, clear the area for stands and tidy and prepare an area for car parking. People needed to bring tools in particular power drills and screwdrivers. Soup will be provided by Brian. Jill, Penny and Lorraine would ensure a supply of hot drinks. The working party needed only to bring sandwiches. 22nd March had been scheduled for moving the hives from Flitcham to Blackborough End. **If you would like a learning experience on how to prepare bees for transport, please come along on 22nd March.** Details will be published in next Bee Aware.

The Grand Opening is planned for the 4th April 13.00, with Henry Bellingham officially open the new association apiary on that day.

Margaret Rickard



Our DVD :

If you see someone filming at meetings, it's **Margaret Rickard**.

Margaret has volunteered to make a DVD of life in WNKLBA this year - rushes of the Oxalic Demo are staggeringly good.

You can do your bit by **asking plenty of questions at events** so that all those snippets of useful beekeeping knowledge get recorded.

The Green Quay

We enjoyed the venue so much last year, that it's been booked again for our October Talk. The meal is to be 2 courses, with tea and coffee to finish. The speaker has yet to be confirmed and any ideas are always welcome.

Contacts :

Secretary : Lorraine Gibson 01553 674051 sec.wnklba @virgin.net

Bee-Aware : David Bancalari 01603 755105 david@bancalari. fslife.co.uk



Research Funding

What a good start to the year. The government has found £4.3 million for the National Bee Unit (NBU), the Co-op has committed £150,000 and our research funding bid to BBSRC is still in with a chance.

NBU

The additional funding will be used to start the implementation of the Bee Health Strategy by providing insight into numbers of beekeepers and also further analyse pest and disease risks. The results will be used to improve the monitoring of diseases and risks. The new funding will strengthen the inspectorate and diagnostic facilities with an increase in total hours spent inspecting bees.

There will also be an increase in the training and education programmes, including a new position created to promote and develop this area. More funding will be put into a new research programme, which will also consider wider problems affecting pollinators, not just honey bees.

E.A.R.S

Eastern Associations Research Studentship submitted an application to BBSRC for £100,000 in October. The fact that we have not heard back means we have not been rejected and are still in with a shout. We should hear one way or another by April – and there are other possibilities if BBSRC do not fund us.

Topical Tip January 2009 from John Everett

In 1921 an American, G.S. Demuth, suggested that bees swarm when they get overcrowded. In 1954 Colin Butler produced his Queen Substance theory. When workers receive insufficient Queen Substance they make preparations to swarm. This may happen when they are overcrowded.

In cold January it is difficult to imagine bees swarming but I collected two swarms in Norwich in the first half of April in previous years.

After mid March, on warm day, it is worthwhile lifting the crownboard and counting the number of frames with bees on. If bees are on 9 or more, add a super to give them space, preventing overcrowding and allowing the queen substance to be spread through your colony.

Remember to check the crownboard for the queen! Please do not take out frames and inspect them in March. Wait until the weather is much warmer 16°C + with no or little wind.

John Everett 01508 538231

Bee Brûlée

Surprising the conversations you have in the toilets at Stoneleigh : John Chapple has cornered the market in selling drones to specialist restaurants.

As an alternative to seared zebra, you can try deep fried drones or bee brûlée. The restaurants used to import hornets from Japan but now come to John for freeze-dried drones.

At this time of year, John also markets Ivy Honey to a local micro brewery, where it re-appears as Ivy Ale.



REPORTS

MICROSCOPY

The Waveney Microscopy Study Group (WMSG)



Several WNKLBA members attended this course which finished on a high note on 13th December with students opting to take assessments in the recognition of key bee diseases: European Foulbrood, American Foulbrood, Nosema and Acarine. Assessments were moderated and overseen by the Central Science Laboratory (Selwyn Wilkins and Ben Jones), Paul Metcalf and Alan Kime from the BBKA. Andy Wattam, Regional Bee Inspector was also there to support the group and the study of bee disease to help his operation and bee health aims.

Alan Kime gave a short talk on the BBKA Microscopy exam and as a result seven students expressed an interest in taking the BBKA qualification.

Certificates of competency for the visual identification of above bee diseases through a microscope will be issued to successful students and we hope they will be presented by the Chair of local bee clubs.

Students were also able to express their thoughts on how the WMSG should progress, following this feedback session and other comments the WMSG hopes to publish a calendar of events for 2009 soon.

Everyone agreed it had been a fantastic course and the teaching and content had been second to none. One student commented that he had been waiting to go on such a course for 30 years!

Caroline Liston of the NBKA also attended the feedback session at our invitation and made some helpful suggestions.

Also, on the horizon is a new name for the Group.

The WMSG thanks the CSL for the supply of disease combs and a licence to handle infectious material.

Avis Judd

Veterinary Medicines Directorate

The VMD have announced a timetable to work with bee keeping organisations to simplify the licensing of bee treatments. As well as speeding up the approval process, VMD will work with beekeepers, NBU and AMTRA to set up a SQP-bee qualification:

Suitably Qualified Persons (SQP) will have to undergo training and pass tests but will then be authorised to distribute products under VMD approval. So far about twenty vets have signed up to the scheme



VMD

